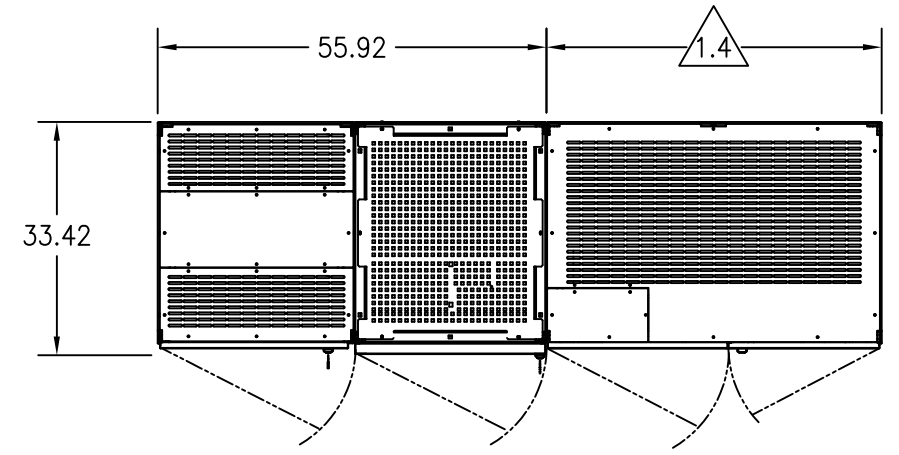
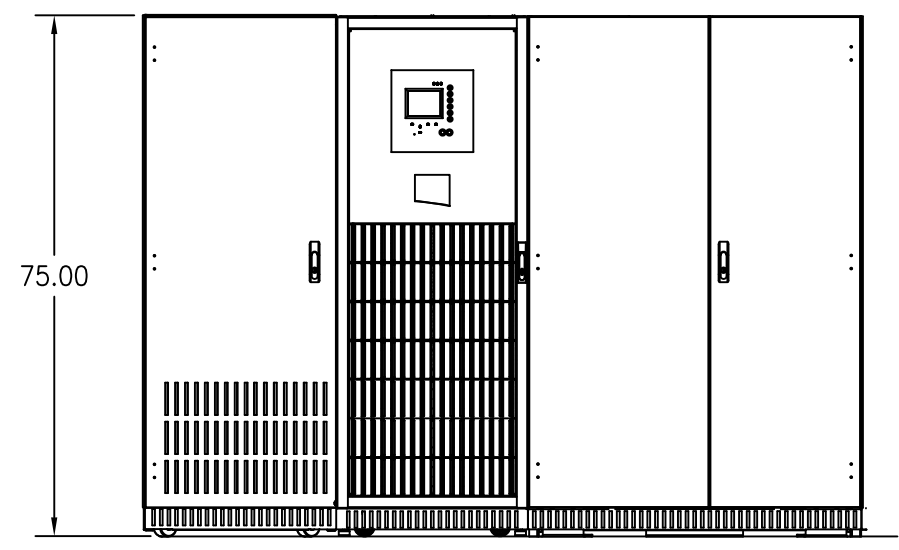


ALL TECHNICAL INFORMATION CONTAINED IN THIS DOCUMENT IS THE EXCLUSIVE PROPERTY OF SCHNEIDER ELECTRIC INDUSTRIES SAS AND MAY NEITHER BE USED NOR DISCLOSED WITHOUT ITS PRIOR WRITTEN CONSENT.

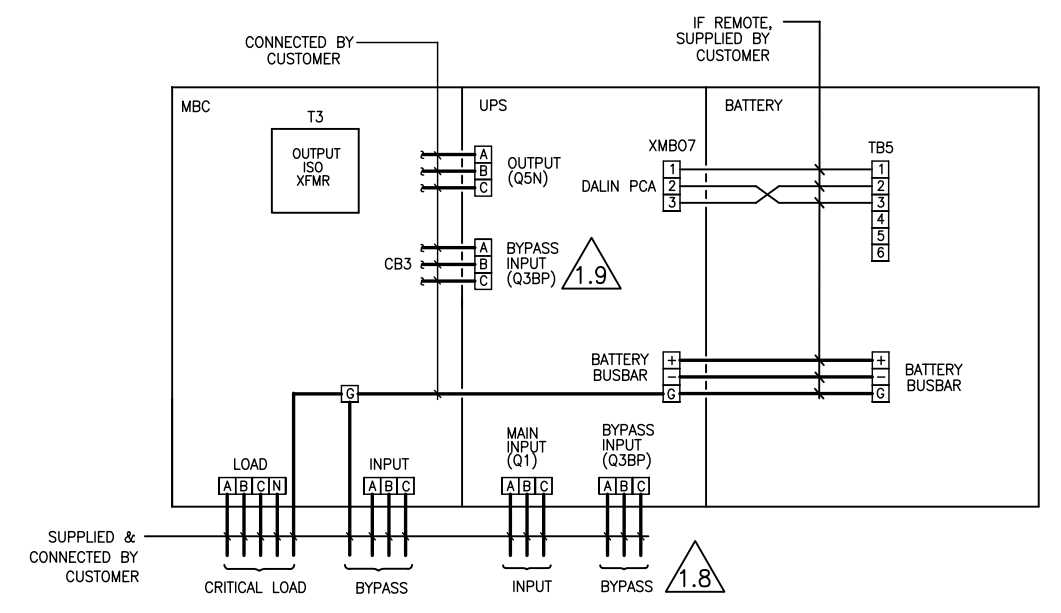
REVISIONS			
REV	DESCRIPTION	DATE	APPROVED
A00	NEW RELEASE	02/02/09	I.K.



TOP VIEW

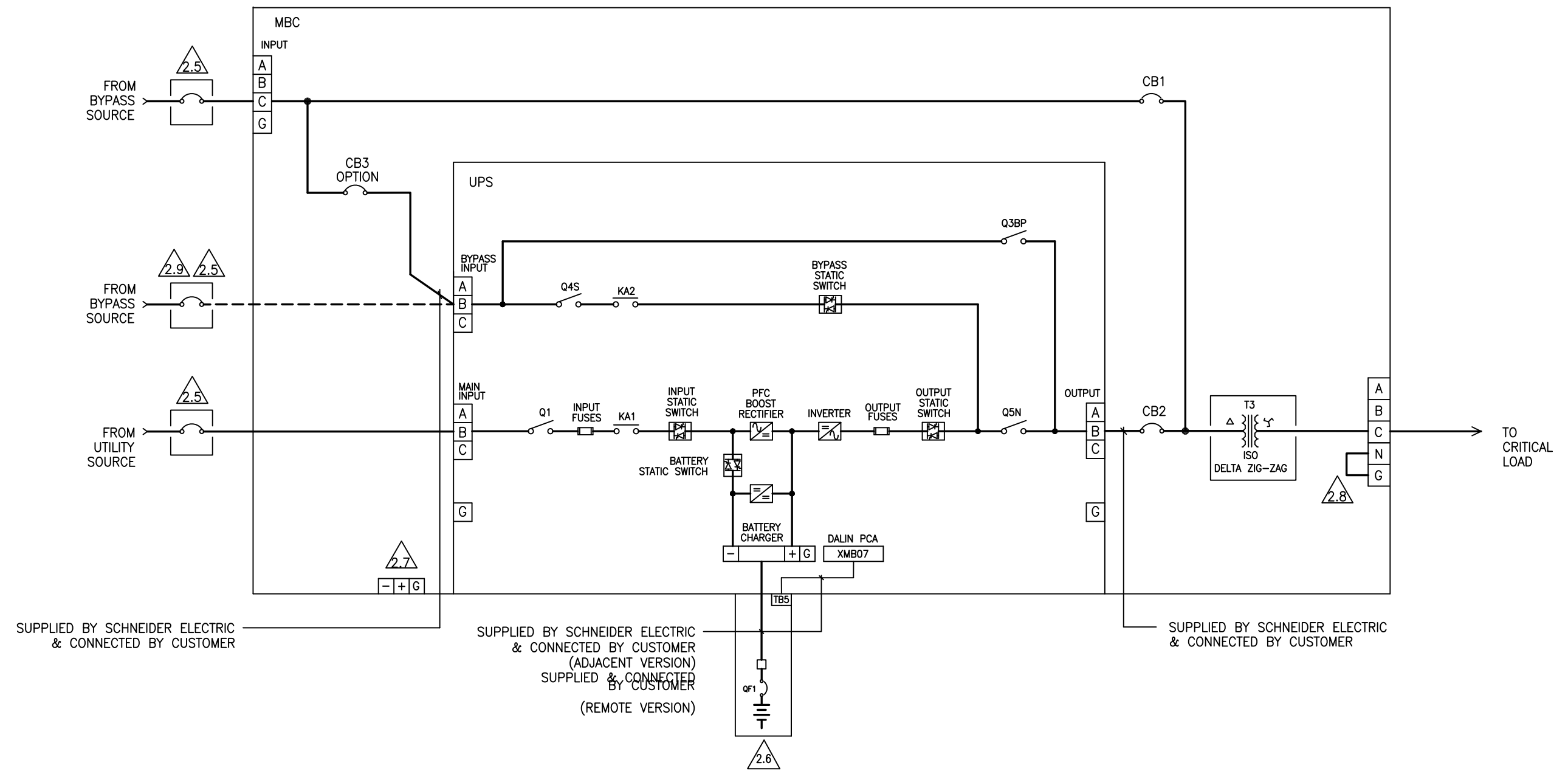


FRONT VIEW



- NOTES: UNLESS OTHERWISE SPECIFIED
- 1.1 DIMENSION FORMAT IS INCHES.
 - 1.2 ALL DIMENSIONS ARE TO THE OUTSIDE EDGE OF CABINET, EXCLUDING DOOR LOCKS AND ALL HARDWARE.
 - 1.3 REFER TO EACH INDIVIDUAL CABINET INSTALLATION DRAWING INDICATED BELOW:
 - A. 90-174700-00 UPS.
 - B. 90-174704-00 MBC WITH TRANSFORMER.
 - 1.4 OPTIONAL, UP TO FOUR (4) BATTERY CABINETS. CABINETS LOCATED ADJACENT OR REMOTELY. EACH ADJACENT CABINET IS 26.24"W, 32.24"W OR 48.24"W WITH ONE OUTSIDE SIDE PANEL. SHOWN WITH 48"W CABINET. EACH REMOTE CABINET IS 26.48"W, 32.48"W OR 48.48"W. REFER TO EACH INDIVIDUAL CABINET INSTALLATION DRAWING INDICATED BELOW:
 - A. 90-174701-00 BATTERY (26 in & 32 in).
 - B. 90-174701-01 BATTERY (48 in).
 - 1.5 CABINETS ARE ATTACHED TOGETHER USING BRACKETS.
 - 1.6 REFERENCE SEISMIC DRAWING 90-174709-00.
 - 1.7 FOR TOP FAN EXHAUST, ALLOW MINIMUM TWO FEET CLEARANCE.
 - 1.8 FOR 2CB MBC ONLY.
 - 1.9 FOR 3CB MBC ONLY.
 - 1.10 FOR TOP ENTRY ROUTE UPS INPUT AND BYPASS CABLES THROUGH THE MBC CABINET.

CONTRACT NO.		SCHNEIDER ELECTRIC Critical Power & Cooling Service Division 1660 Scenic Avenue Costa Mesa, CA. 92626 U.S.A.		
APPROVALS	DATE	SYSTEM INSTALLATION UPS DUAL INP, BATT, MBC LOAD XFMR MGE GALAXY 5000		
DRAWN	12/31/08			
CHECKED	12/31/08			
ISSUED	12/31/08			
DO NOT SCALE DRAWING		SIZE B CAGE CODE 9L985 SCALE NONE	DWG NO. 90-174770-01 CAD 90-174770-01_1	REV. A00 SHEET 1 OF 4



SUPPLIED BY SCHNEIDER ELECTRIC & CONNECTED BY CUSTOMER

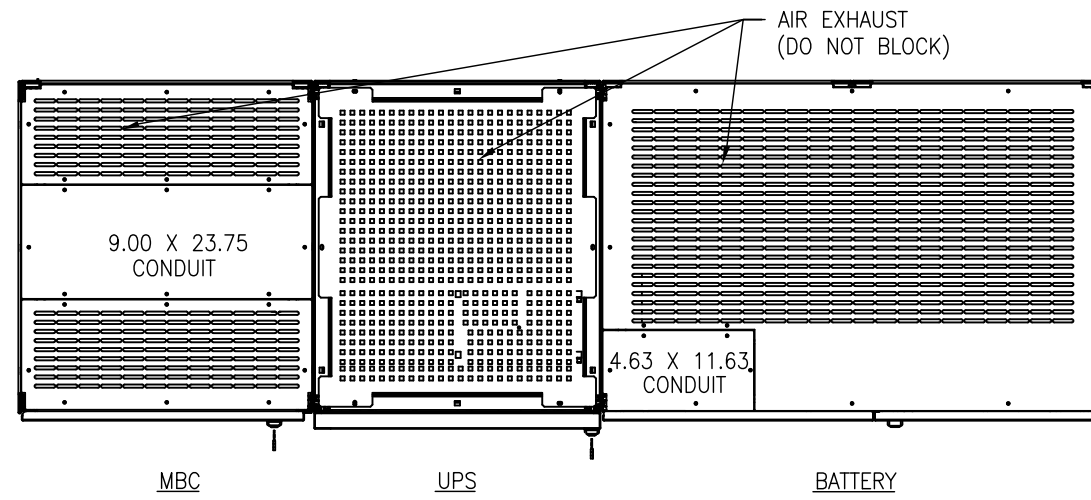
SUPPLIED BY SCHNEIDER ELECTRIC & CONNECTED BY CUSTOMER (ADJACENT VERSION)
 SUPPLIED & CONNECTED BY CUSTOMER (REMOTE VERSION)

SUPPLIED BY SCHNEIDER ELECTRIC & CONNECTED BY CUSTOMER

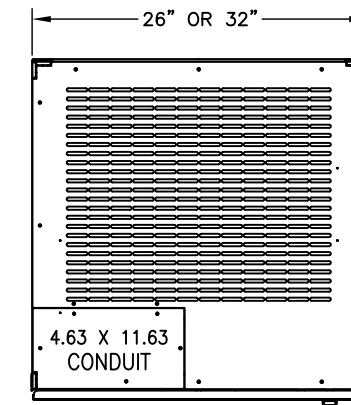
NOTES: UNLESS OTHERWISE SPECIFIED

- 2.1 FOLLOW ALL APPLICABLE NEC & LOCAL ELECTRICAL CODES.
- 2.2 ALL EXTERNAL WIRING BY CUSTOMER.
- 2.3 POWER & CONTROL CABLES SHALL BE IN SEPARATE CONDUITS.
- 2.4 CUSTOMER IS RESPONSIBLE FOR CONNECTING ALL SCHNEIDER ELECTRIC SUPPLIED CABLES.
- 2.5 UPSTREAM PROTECTIVE DEVICE REQUIRED. PROVIDED BY CUSTOMER.
- 2.6 ONE CABINET SHOWN. FOR UP TO FOUR (4) BATTERY CABINET CONNECTIONS, REFER TO DRAWINGS 90-174701-00 OR 90-174701-01.
- 2.7 FOR STAND ALONE BATTERY CABINETS WITH TOP ENTRY SYSTEM CONFIGURATION, DC CONNECTION IS FED THROUGH THE ADJACENT MBC.
- 2.8 THE OUTPUT NEUTRAL IS BONDED TO GROUND.
- 2.9 FOR 2CB MBC OPTION ONLY. SHOULD FEED FROM THE SAME SOURCE AS THE MBC.

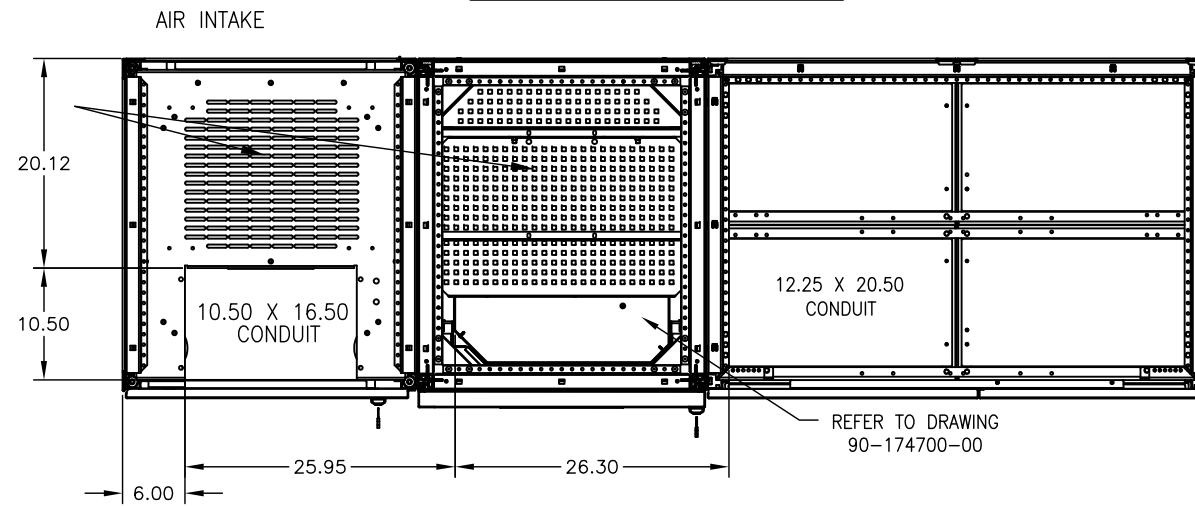
SIZE	CAGE CODE	DWG NO.	REV.
B	9L985	90-174770-01	A00
SCALE	NONE	CAD 90-174770-01_2	SHEET 2 OF 4



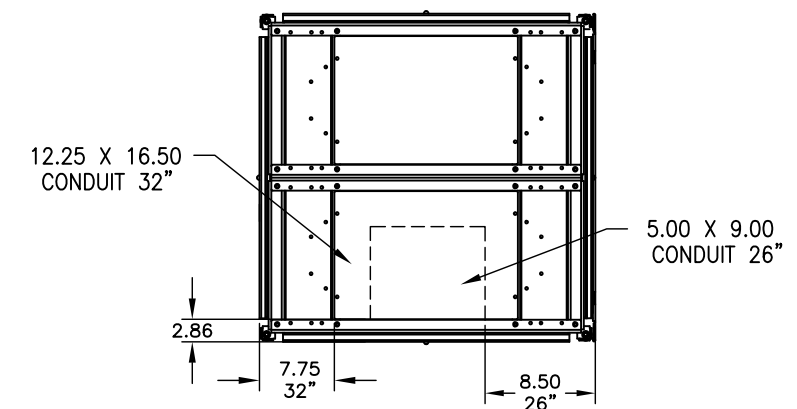
TOP ENTRY CONDUIT



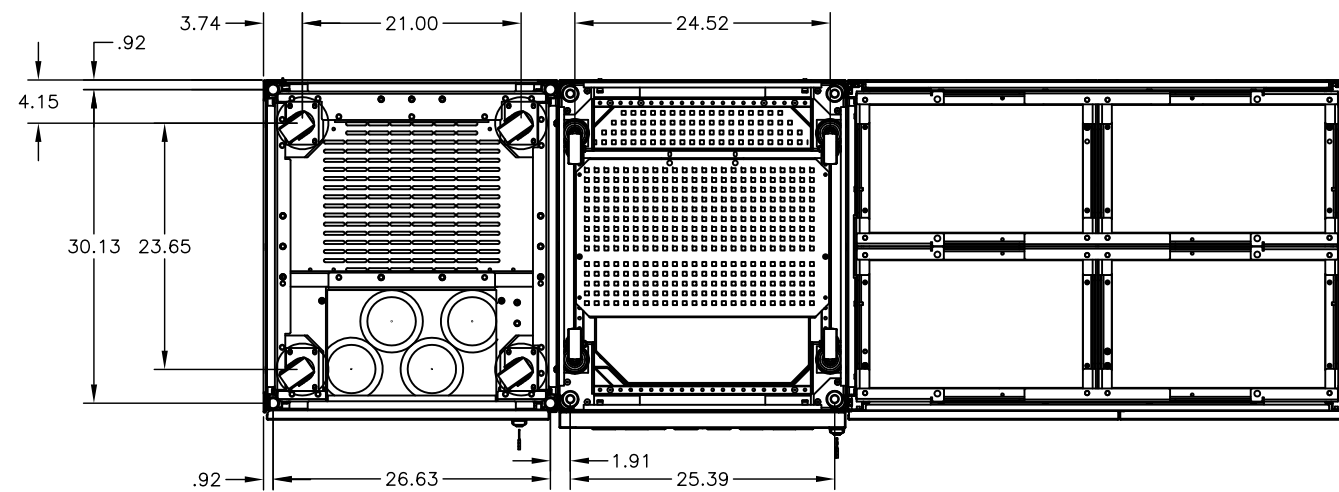
BATTERY (26" OR 32")



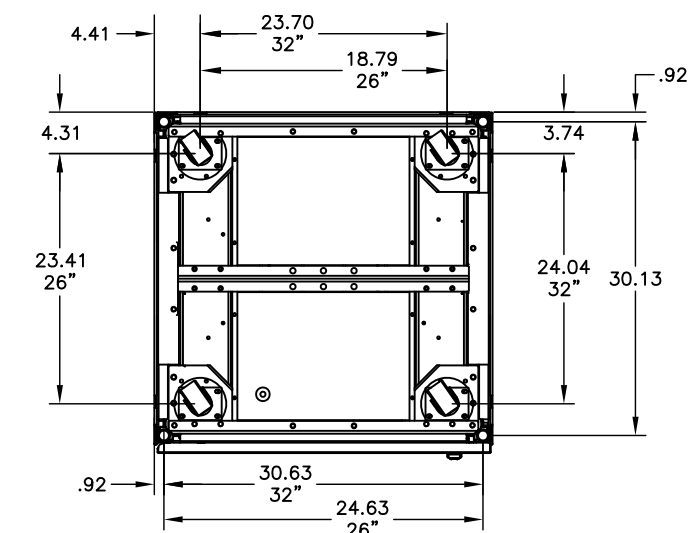
BOTTOM ENTRY CONDUIT LOCATIONS



BATTERY (26" OR 32")

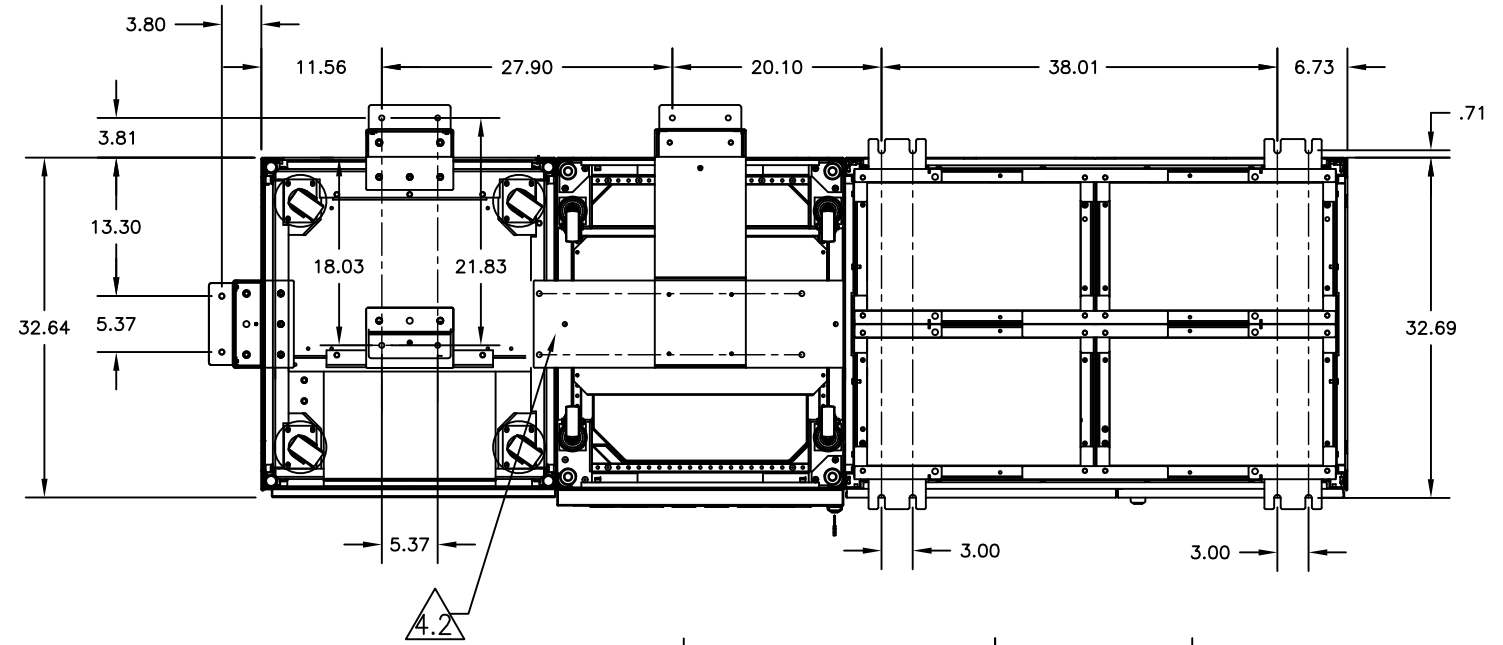


CASTER & LEVELER LOCATIONS

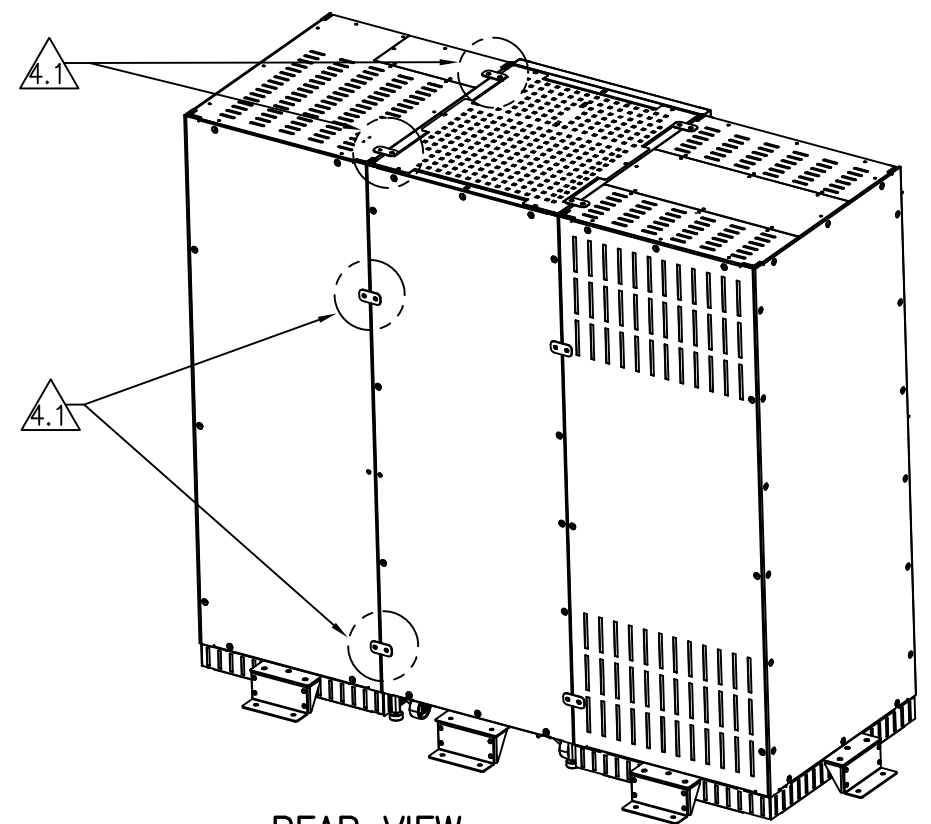


BATTERY (26" OR 32")

SIZE	CAGE CODE	DWG NO.	REV.
B	9L985	90-174770-01	A00
SCALE	NONE	CAD 90-174770-01_3	SHEET 3 OF 4



WITH BATTERY 48"W



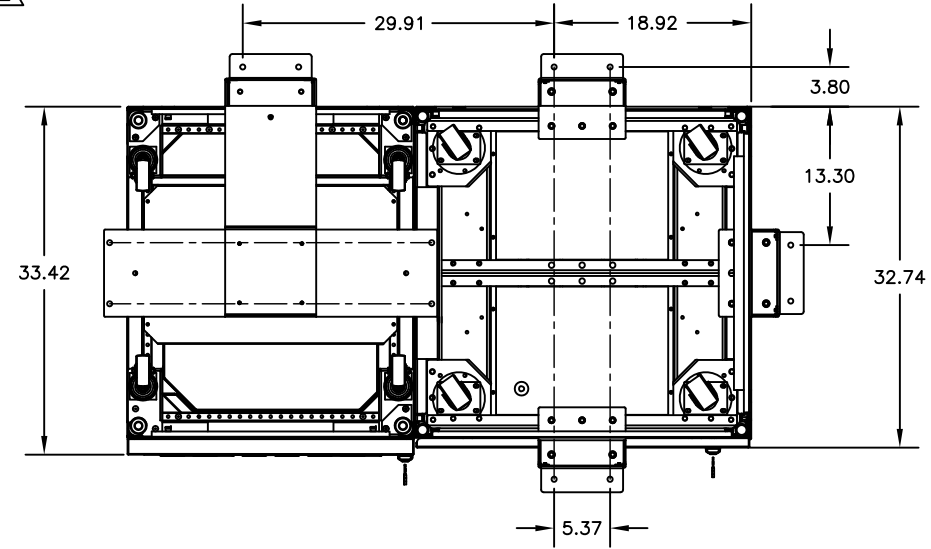
REAR VIEW

INTERCONNECT BRACKETS LOCATION

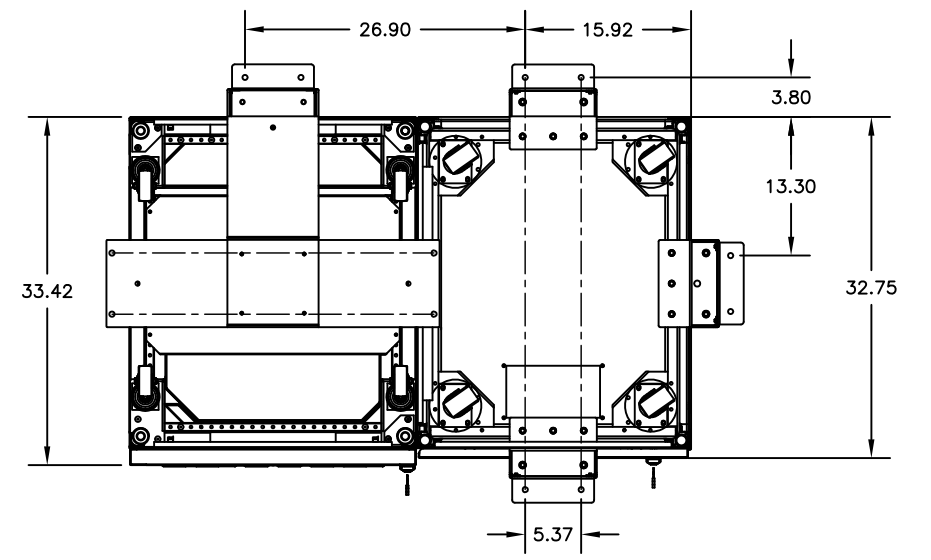
TO INTERCONNECT ADJACENT UNITS (85-174193-00)

- 4.1 USE 4 BRACKETS 71-174283-00 (2 ON TOP AND 2 ON THE REAR).
- 4.2 USE BRACKET 71-174281-00 ON THE BOTTOM.

NOTES: UNLESS OTHERWISE SPECIFIED



WITH BATTERY 32"W



WITH BATTERY 26"W

SEISMIC AND INTERCONNECT BRACKETS LOCATION

SIZE	CAGE CODE	DWG NO.	REV.
B	9L985	90-174770-01	A00
SCALE	NONE	CAD 90-174770-01_4	SHEET 4 OF 4